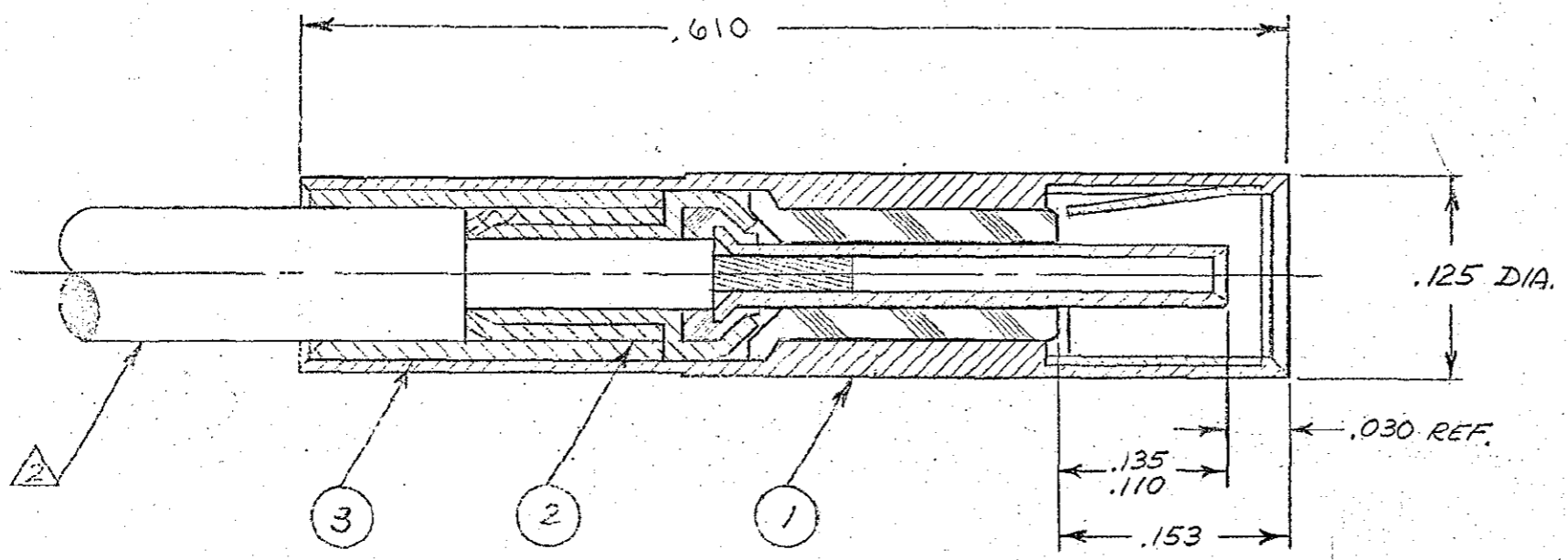


These drawings and specifications are the property of Microdot Inc. and shall not be divulged, reproduced or copied, or used as the basis for the manufacture or sale of any article without written permission of Microdot Inc.



QTY	PART NO.	NOMENCLATURE	MAT'L & SPEC	ITEM
1	014-0004-0002	CRIMP SLEEVE	COPPER ALLOY	③
1	014-1219-0001	CRIMP SLEEVE SUB ASSY.		②
1	014-1196-0001	HOUSING SUB-ASSY		①

5. USE MICRODOT TOOL # 010-0150-0000 TO CRIMP CENTER COND. & MALCO TOOL 010-0132-0000 TO CRIMP REAR OF HOUSING.
4. SEE RF-ASMB-15 FOR CABLE ASSEMBLY INSTRUCTIONS.
3. MATES WITH ALL LEPRA/CON 141- SLIDE-ON SERIES JACKS & RECEPTACLES.
- ② CABLE ACCEPTANCE DIMENSIONS - CENTER COND. .012 NOM; DIELECTRIC .040 MAX; JACKET .081 MAX.
1. ALL METALLIC PARTS ARE GOLD PLATED PER MIL-G-45204, TYPE II, GRADE C, CLASS I.

NOTES: UNLESS OTHERWISE SPECIFIED

C 20634 REDESIGNED & REDRAWN D 2/4/58 ITEM 2 WAS 014-1009-0001; DIM CHANGES & ADDITIONS; NOTES 1 & 2 UPDATED; ADDED NOTE 5. E 21703 1610 WAS .604 1-3-77 F 23271 CRIMP TOOL WAS 010-0150-0000 G 31921 NOTES 10 & 11 #010-0161-0000 H 35397 UPDATE REV LETTER J UPDATE REV LETTER 39549 K 40077 REV. UPDATE L 40446 UPDATE REV LETTER.		STANDARD TOLERANCES UNLESS OTHERWISE SPECIFIED DEC. # 010 FRAC. # 1/64" ANGLES 25° CONCENTRICITY MAX. DIA. HOLE DIA. FE SURF. AC. ROUGHNESS MICRO INCHES TOLERANCES TO ALL DIMENSIONS UNLESS OTHERWISE SPECIFIED APPLY TO STOCK DIMENSIONS	MALCO A MICRODOT COMPANY, INC. 306 PASADENA AVE., SO. PASADENA, CALIF.
SURFACE TREATMENT NOTED MATERIAL NOTED		REF. <i>Malco</i> APP. <i>CRG</i> CHECKED BY DRAWN BY V. METZ (HFM) SCALE 10/1 DATE 6/30/66	
PLUG, SLIDE-ON LEPRA/CON		PROB. CODE 946 CODE CDM WORKING NUMBER 142-1000-0001 L	